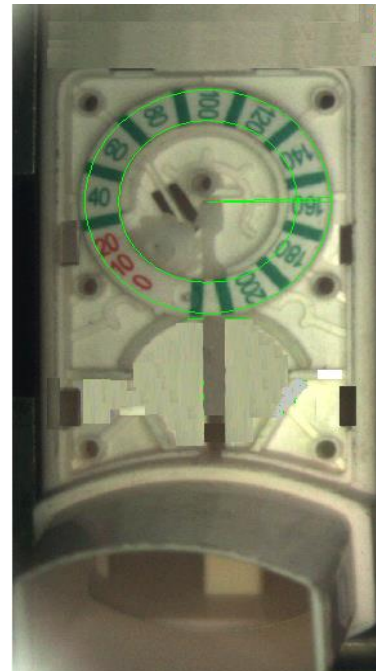




**Asthma holder inspection system**



## ASTHMA HOLDER INSPECTION SYSTEM

**INSPECTION SYSTEM** developed by the TIVS is a comprehensive inspection solution for Determination of presence of hole at the inner side with exact dimensions. The inspection system is compact in design and can be easily integrated into existing production lines. The system is programmed to identify common faults emanating from the production and reject the defective components.

### Highlights of the system

- ✓ Designed to work in the industrial environment.
- ✓ Can be easily integrated into the existing machinery.
- ✓ Easy menu based programming. Doesn't require knowledge of programming languages like C or C++
- ✓ Faster System Integration leading to Faster ROI.
- ✓ Optional data capturing system to store and report shift wise data.

### Standard Solution Offering

The solution offering are strategically designed to suit the industry needs.

The system comprises of the following stations:

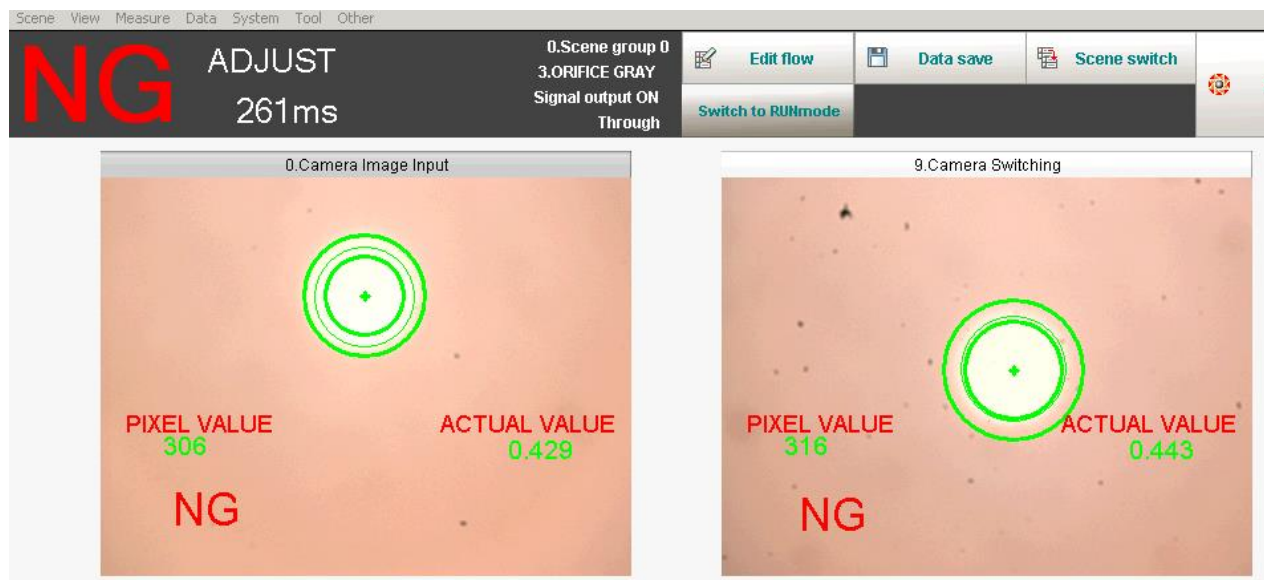
- Single /Dual Inspection station.
- Single / Dual high speed vision capturing & processing system.
- Single / Dual high speed strobe controlled lighting system.
- LCD monitor for process monitoring.
- Programing console.
- High Speed rejection System.
- PLC Based control panel.
- Complete mounting accessories
- Automatic Feeder to feed samples to a linear conveyor
- Inspection station for inspecting the various defects.
- Pneumatic rejection station for rejecting the defective samples

**OPTIONAL:** Data collection terminal to capture and store shift wise statistical information. The standard reporting feature includes.

- a) Total Components Inspected.
- b) Total components Rejected.
- c) Rejected components to show the performance of the system
- d) Graphs and trends to show the performance of the system.

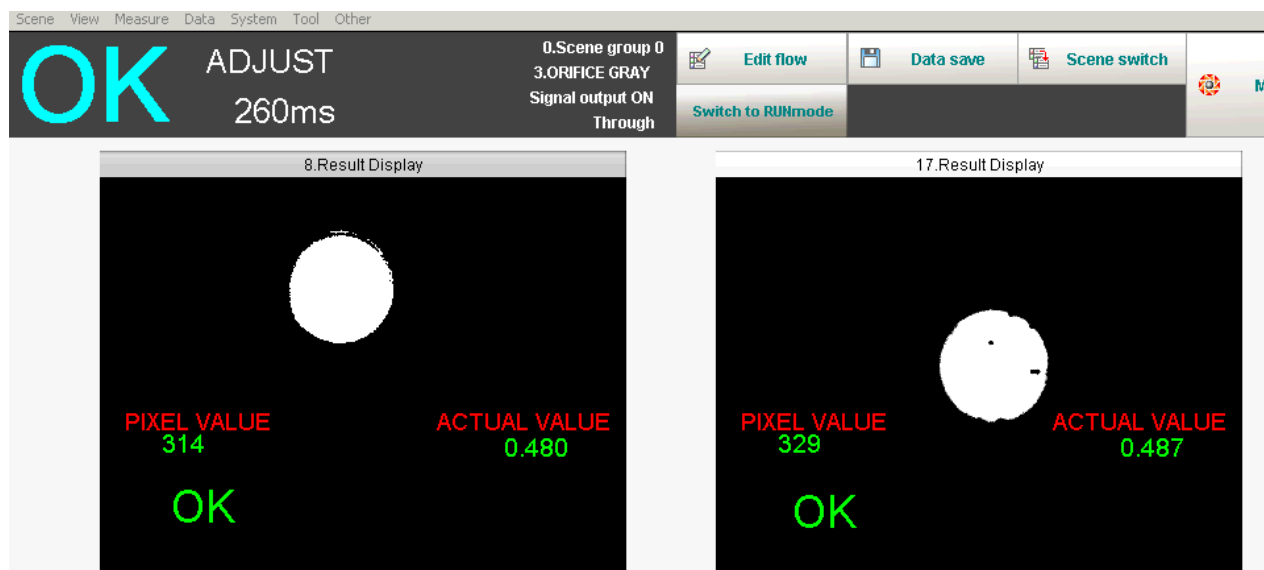
**Following is the list of parameters to be inspected on the given samples:**

In this image dimension of hole is not correct and hole is not present through-out therefore it gives output as **NG**.



**OK sample:**

In this sample the diameter of the hole is correct and hole is present through out therefore it gives output as **OK**





**Application Details.** The vision system developed by Tej, serves the important purpose of inspecting of the asthma holder inner hole. Camera vision system is used for inspecting these defects, which is a stand-alone system meant to work in rugged industrial conditions. The system works on the principle of signal processing.

### **Why Us**

TIVS is driven by the core values of service, integrity, and innovation. Our strength lies in our agility to adapt to a dynamic market, and our ability to transform challenges into successful market opportunities.

Our capabilities target winning results by understanding your technology needs aligned to your business objectives. Our differentiator is in servicing our clients to make them win; when you talk to us, you will understand our technologists possess significant insight into your business processes, much better than many other service providers.

We are renowned for our ability to provide products, solutions and implementation frameworks that are delivered through a strong focus on core business issues, strong process orientation and industry domain knowledge. We partner with our clients and implement solutions to successful completion, and ensure that they realize the desired business benefits.



We consistently focus on:

- \* Reducing the Total Cost of Ownership (TCO) for our customers
- \* Understanding customer needs before making recommendations
- \* Offering solutions based on specific customer needs
- \* Creating an organization based on learning, innovation, and quality
- \* Enabling employees to realize their full potential
- Conducting ourselves with the highest sense of integrity

---

For More Information contact.

Tej Control Systems Pvt.Ltd.

Plot no.329/331,Road no.25

wagle Industrial estate,

Thane West-400604.

Tel: +91 22 25838191-98

Fax: +91 22 25838199

email:-[tivs@tejcontrol.com](mailto:tivs@tejcontrol.com)