

# Liquid cooling

## Air/water heat exchangers

Wall-mounted .....	300 – 500 W .....	438
Wall-mounted .....	600 – 1000 W .....	439
Wall-mounted .....	1250 – 3000 W .....	440
Wall-mounted .....	3000 – 5000 W .....	441
Wall-mounted .....	7000 W .....	442
Wall-mounted HD .....	600 – 1300 W .....	443
Roof-mounted .....	1875 – 4000 W .....	444

## Liquid Cooling Package

LCP Rack Industry .....	10 kW .....	445
-------------------------	-------------	-----

## Chillers

TopTherm .....	1000 – 1500 W .....	446
TopTherm .....	3000 – 6000 W .....	447
TopTherm, wall-mounted .....	1000 – 2500 W .....	448
TopTherm .....	8000 – 16000 W .....	449
TopTherm .....	20000 – 40000 W .....	450



# Air/water heat exchangers



Accessories for climate control Page 454 Chillers Page 446 Therm software Page 474

#### Colour:

- RAL 7035

#### Protection category IP to IEC 60 529:

- IP 55

#### Cooling medium:

- Water (see Internet for specifications)

#### Supply includes:

- Fully wired ready for connection (plug-in terminal strip)
- Drilling template
- Sealing and assembly parts

#### Note:

- Integral non-return valve for version with e-Comfort controller

#### Approvals:

Available on the Internet

#### Performance diagrams:

Available on the Internet

## Output class 300 – 500 W, wall-mounted

Model No.		Packs of	3212.024	3212.230	3363.100	3363.500	Page
Design	Water-carrying parts, copper/brass (Cu/CuZn)		■	■	■	■	
Temperature control	Basic controller (factory setting +35°C)		–	–	■	–	
	e-Comfort controller (factory setting +35°C)		–	–	–	■	
<b>Total cooling output L35 W10, 200 l/h kW</b>			<b>0.3</b>	<b>0.3</b>	–	–	
<b>Total cooling output L35 W10, 400 l/h kW</b>			–	–	<b>0.5</b>	<b>0.5</b>	
Power consumption P <sub>el</sub> 50/60 Hz W			26	23 / 27	37 / 38	37 / 38	
Rated operating voltage V			24 (DC)	230, 1~, 50/60	230, 1~, 50/60	230, 1~, 50/60	
Width mm			150	150	280	280	
Height mm			300	300	550	550	
Depth mm			85	85	120	120	
Rated current max. A			1.2	0.11 / 0.13	0.18 / 0.18	0.18 / 0.18	
Pre-fuse A			2	2	4	4	
Operating temperature range			+1°C...+70°C	+1°C...+70°C	+1°C...+70°C	+1°C...+70°C	
Setting range			–	–	+20°C...+55°C	+20°C...+55°C	
Water inlet temperature			+1°C...+30°C	+1°C...+30°C	+1°C...+30°C	+1°C...+30°C	
Water connection	½" connector sleeve		–	–	■	■	
	G ¾" external thread		–	–	■	■	
	¾" connector sleeve		■	■	–	–	
Permissible operating pressure (p. max.) bar			1 - 10	1 - 10	1 - 10	1 - 10	
Air throughput of fans (unimpeded air flow), internal circuit 50/60 Hz m³/h			250	280 / 310	290 / 345	290 / 345	
Weight kg			3.2	3.2	8.0	8.0	
<b>Accessories</b>							
Condensate hose		1 pc(s).	3301.610	3301.610	3301.612	3301.612	464
Door-operated switch		1 pc(s).	4127.010	4127.010	4127.010	4127.010	755
Toroidal transformer		1 pc(s).	–	3201.960	see page	see page	471
Fitting G ¾"		2 pc(s).	–	–	3201.900	3201.900	465
Flow regulator valve			see page	see page	see page	see page	465
Connection set		1 pc(s).	–	–	3201.990	3201.990	465
Cooling medium (ready-mixed)			see page	see page	see page	see page	465
Master/slave cable		1 pc(s).	–	–	–	3124.100	471
Interface board		1 pc(s).	–	–	–	3124.200	470

# Air/water heat exchangers

## Output class 600 – 1000 W, wall-mounted

Model No.		Packs of	3214.100	3364.504	3364.100	3364.500	Page
Design	Water-carrying parts, copper/brass (Cu/CuZn)		■	–	■	■	
	Water-carrying parts, stainless steel (1.4571)		–	■	–	–	
Temperature control	Basic controller (factory setting +35°C)		–	–	■	–	
	e-Comfort controller (factory setting +35°C)		–	■	–	■	
	Thermostat-controlled magnetic valve		■	–	–	–	
<b>Total cooling output L35 W10, 200 l/h kW</b>			<b>0.6</b>	–	–	–	
<b>Total cooling output L35 W10, 400 l/h kW</b>			<b>0.7</b>	<b>0.95</b>	<b>1</b>	<b>1</b>	
Power consumption P <sub>el</sub> 50/60 Hz W			36 / 37	37 / 38	37 / 38	37 / 38	
Rated operating voltage V, ~, Hz			230, 1~, 50/60	230, 1~, 50/60	230, 1~, 50/60	230, 1~, 50/60	
Width mm			200	280	280	280	
Height mm			500	550	550	550	
Depth mm			100	120	120	120	
Rated current max. A			0.17 / 0.18	0.18 / 0.18	0.18 / 0.18	0.18 / 0.18	
Pre-fuse A			2	4	4	4	
Operating temperature range			+1°C...+70°C	+1°C...+70°C	+1°C...+70°C	+1°C...+70°C	
Setting range			+20°C...+55°C	+20°C...+55°C	+20°C...+55°C	+20°C...+55°C	
Water inlet temperature			+1°C...+30°C	+1°C...+30°C	+1°C...+30°C	+1°C...+30°C	
Water connection	½" connector sleeve		■	■	■	■	
	G ¾" external thread		–	■	■	■	
Permissible operating pressure (p. max.) bar			1 - 10	1 - 10	1 - 10	1 - 10	
Air throughput of fans (unimpeded air flow), internal circuit 50/60 Hz m³/h			280 / 310	290 / 345	290 / 345	290 / 345	
Weight kg			7.0	9.0	9.0	9.0	
<b>Accessories</b>							
Condensate hose		1 pc(s).	3301.612	3301.612	3301.612	3301.612	464
Door-operated switch		1 pc(s).	4127.010	4127.010	4127.010	4127.010	755
Toroidal transformer			see page	see page	see page	see page	471
Fitting G ¾"		2 pc(s).	–	3201.900	3201.900	3201.900	465
Flow regulator valve			see page	see page	see page	see page	465
Connection set		1 pc(s).	–	3201.990	3201.990	3201.990	465
Cooling medium (ready-mixed)			see page	see page	see page	see page	465
Master/slave cable		1 pc(s).	–	3124.100	–	3124.100	471
Interface board		1 pc(s).	–	3124.200	–	3124.200	470

Accessories



## Connection set

see page 465

# Air/water heat exchangers

## Output class 1250 – 3000 W, wall-mounted

Model No.	Packs of	3215.100	3373.100	3373.500	3374.504	3374.100	Page
Design	Water-carrying parts, copper/brass (Cu/CuZn)	■	■	■	–	■	
	Water-carrying parts, stainless steel (1.4571)	–	–	–	■	–	
Temperature control	Basic controller (factory setting +35°C)	–	■	–	–	■	
	e-Comfort controller (factory setting +35°C)	–	–	■	■	–	
	Thermostat-controlled magnetic valve	■	–	–	–	–	
<b>Total cooling output L35 W10, 200 l/h kW</b>		<b>1.25</b>	–	–	–	–	
<b>Total cooling output L35 W10, 400 l/h kW</b>		<b>1.3</b>	<b>2</b>	<b>2</b>	<b>2.8</b>	<b>3</b>	
Power consumption P <sub>el</sub> 50/60 Hz W		83 / 85	110 / 140	110 / 140	169 / 232	169 / 232	
Rated operating voltage V, ~, Hz		230, 1~, 50/60	230, 1~, 50/60	230, 1~, 50/60	230, 1~, 50/60	230, 1~, 50/60	
Width mm		200	400	400	400	400	
Height mm		950	950	950	950	950	
Depth mm		100	145	145	145	145	
Rated current max. A		0.38 / 0.4	0.49 / 0.61	0.49 / 0.61	0.76 / 1.01	0.76 / 1.01	
Pre-fuse A		4	4	4	4	4	
Operating temperature range		+1°C...+70°C	+1°C...+70°C	+1°C...+70°C	+1°C...+70°C	+1°C...+70°C	
Setting range		+20°C...+55°C	+20°C...+55°C	+20°C...+55°C	+20°C...+55°C	+20°C...+55°C	
Water inlet temperature		+1°C...+30°C	+1°C...+30°C	+1°C...+30°C	+1°C...+30°C	+1°C...+30°C	
Water connection	½" connector sleeve	■	■	■	■	■	
	G ¾" external thread	–	■	■	■	■	
Permissible operating pressure (p. max.) bar		1 - 10	1 - 10	1 - 10	1 - 10	1 - 10	
Air throughput of fans (unimpeded air flow), internal circuit 50/60 Hz m³/h		680 / 735	880 / 950	880 / 950	1150 / 1300	1150 / 1300	
Weight kg		13.0	20.0	20.0	23.0	23.0	
<b>Accessories</b>							
Condensate hose		1 pc(s).	3301.612	3301.612	3301.612	3301.612	464
Door-operated switch		1 pc(s).	4127.010	4127.010	4127.010	4127.010	755
Toroidal transformer			see page	–	–	–	471
Fitting G ¾"		2 pc(s).	–	3201.900	3201.900	3201.900	465
Flow regulator valve			see page	see page	see page	see page	465
Connection set		1 pc(s).	–	3201.990	3201.990	3201.990	465
Cooling medium (ready-mixed)			see page	see page	see page	see page	465
Master/slave cable		1 pc(s).	–	–	3124.100	3124.100	471
Interface board		1 pc(s).	–	–	3124.200	3124.200	470

Accessories



## TopTherm chillers

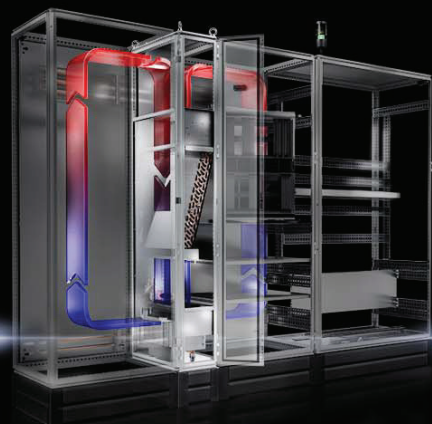
see page 446

# Air/water heat exchangers

## Output class 3000 – 5000 W, wall-mounted

Model No.	Packs of	3374.500	3375.504	3375.100	3375.500	Page
Design	Copper/brass (Cu/CuZn)	–	–	–	■	
	Water-carrying parts, copper/brass (Cu/CuZn)	■	–	■	–	
Temperature control	Water-carrying parts, stainless steel (1.4571)	–	■	–	–	
	Basic controller (factory setting +35°C)	–	–	■	–	
	e-Comfort controller (factory setting +35°C)	■	■	–	■	
<b>Total cooling output L35 W10, 200 l/h W</b>		–	–	–	–	
<b>Total cooling output L35 W10, 400 l/h kW</b>		<b>3</b>	<b>4.5</b>	<b>5</b>	<b>5</b>	
Power consumption P <sub>el</sub> 50/60 Hz W		169 / 232	170 / 170	170 / 170	170 / 170	
Rated operating voltage V, ~, Hz		230, 1~, 50/60	230, 1~, 50/60	230, 1~, 50/60	230, 1~, 50/60	
Width mm		400	450	450	450	
Height mm		950	1400	1400	1400	
Depth mm		145	220	220	220	
Rated current max. A		0.76 / 1.01	1.45 / 1.45	1.45 / 1.45	1.45 / 1.45	
Pre-fuse A		4	4	4	4	
Operating temperature range		+1°C...+70°C	+1°C...+70°C	+1°C...+70°C	+1°C...+70°C	
Setting range		+20°C...+55°C	+20°C...+55°C	+20°C...+55°C	+20°C...+55°C	
Water inlet temperature		+1°C...+30°C	+1°C...+30°C	+1°C...+30°C	+1°C...+30°C	
Water connection	½" connector sleeve	■	■	■	■	
	G ¾" external thread	■	■	■	■	
Permissible operating pressure (p. max.) bar		1 - 10	1 - 10	1 - 10	1 - 10	
Air throughput of fans (unimpeded air flow), internal circuit 50/60 Hz m³/h		1150 / 1300	1490 / 1660	1490 / 1660	1490 / 1660	
Weight kg		23.0	39.0	39.0	39.0	
<b>Accessories</b>						
Condensate hose	1 pc(s).	3301.612	3301.612	3301.612	3301.612	464
Door-operated switch	1 pc(s).	4127.010	4127.010	4127.010	4127.010	755
Toroidal transformer		–	–	–	–	
Fitting G ¾"	2 pc(s).	3201.900	3201.900	3201.900	3201.900	465
Flow regulator valve		see page	see page	see page	see page	465
Connection set	1 pc(s).	3201.990	3201.990	3201.990	3201.990	465
Cooling medium (ready-mixed)		see page	see page	see page	see page	465
Master/slave cable	1 pc(s).	3124.100	3124.100	–	3124.100	471
Interface board	1 pc(s).	3124.200	3124.200	–	3124.200	470

Accessories



## LCP – Liquid Cooling Package

see page 445

# Air/water heat exchangers



Accessories for climate control Page 454 Chillers Page 446 Therm software Page 474

**Colour:**

- RAL 7035

**Protection category IP to IEC 60 529:**

- IP 55

**Cooling medium:**

- Water (see Internet for specifications)

**Supply includes:**

- Fully wired ready for connection (plug-in terminal strip)
- Drilling template
- Sealing and assembly parts

**Note:**

- Use 3-pole miniature circuit-breaker

**Approvals:**

- Available on the Internet

**Performance diagrams:**

- Available on the Internet

## Output class 7000 W, wall-mounted

Model No.	Packs of	3216.480	Page
Temperature control	Thermostat-controlled magnetic valve	■	
<b>Total cooling output L35 W10, 500 l/h kW</b>		<b>7</b>	
<b>Total cooling output L35 W20, 500 l/h kW</b>		<b>4.5</b>	
Rated operating voltage V, ~, Hz		400, 3~, 50/60 480, 3~, 60	
Width mm		450	
Height mm		1800	
Depth mm		300	
Rated current max. A		1.4 / 1.6 1.2	
Pre-fuse A		4	
Operating temperature range		+1°C...+70°C	
Setting range		+20°C...+55°C	
Water inlet temperature		+1°C...+30°C	
Water connection	½" connector sleeve	■	
	G ¾" external thread	■	
Permissible operating pressure (p. max.) bar		1 - 10	
Air throughput of fans (unimpeded air flow), internal circuit 50/60 Hz m³/h		3630 / 4670	
Weight kg		79.0	
<b>Accessories</b>			
Door-operated switch	1 pc(s).	4127.010	755
Condensate hose	1 pc(s).	3301.612	464
Flow regulator valve		see page	465
Connection set	1 pc(s).	3201.990	465
Cooling medium (ready-mixed)		see page	465

# Air/water heat exchangers



Accessories for climate control Page 454 Chillers Page 446 Therm software Page 474

Air/water heat exchanger for hygienically sensitive production zones in the food and consumables industry – the optimum addition to the Rittal Hygienic Design range. The cleaning-friendly design reduces the risk of contamination and ensures food safety.

#### Benefits:

- Easy-to-clean, hygienic design
- A roof tilt of 30° prevents objects from being deposited on it, and allows liquids to run off quickly.
- All-round external, replaceable silicone seal prevents the accumulation of dirt between the enclosure and the air/water heat exchanger.

#### Material:

- Enclosure: Stainless steel 1.4301 (AISI 304)

#### Surface finish:

- Enclosure: Brushed, grain 400, peak-to-valley height < 0.8 µm

#### Protection category IP to IEC 60 529:

- IP 56/59

#### Protection category NEMA:

- NEMA 4X

#### Cooling medium:

- Water (see Internet for specifications)

#### Supply includes:

- Fully wired ready for connection (plug-in terminal strip)
- Drilling template
- Sealing and assembly parts

#### Note:

- To achieve a protection category of IP 66/69 to IEC 60 529, the ingress of leakage air through the condensate discharge opening must be completely prevented.

## Output class 600 – 1300 W, wall-mounted HD

Model No.	Packs of	3214.700	3215.700	Page
Temperature control	Thermostat-controlled magnetic valve	■	■	
<b>Total cooling output L35 W10, 200 l/h kW</b>		<b>0.6</b>	<b>1</b>	
<b>Total cooling output L35 W10, 400 l/h kW</b>		<b>0.65</b>	<b>1.2</b>	
Power consumption P <sub>el</sub> 50/60 Hz W		36 / 37	83 / 85	
Rated operating voltage V, ~, Hz		230, 1~, 50/60	230, 1~, 50/60	
Width mm		220	215	
Height mm		526	982	
Depth mm		100	100	
Rated current max. A		0.16 / 0.14	0.38 / 0.47	
Pre-fuse A		2	4	
Operating temperature range		+1°C...+70°C	+1°C...+70°C	
Setting range		+20°C...+60°C	+20°C...+60°C	
Water inlet temperature		+1°C...+30°C	+1°C...+30°C	
Water connection	G ¾" external thread	■	■	
Permissible operating pressure (p. max.) bar		1 - 10	1 - 10	
Air throughput of fans (unimpeded air flow), internal circuit 50/60 Hz m³/h		280 / 310	680 / 735	
Weight kg		6.0	14.0	
<b>Accessories</b>				
Toroidal transformer		see page	see page	471
Cooling medium (ready-mixed)		see page	see page	465

# Air/water heat exchangers



Accessories for climate control Page 454 Chillers Page 446 Air routing Page 461

**Colour:**

– RAL 7035

**Protection category IP to IEC 60 529:**

– IP 55

**Cooling medium:**

– Water (see Internet for specifications)

**Supply includes:**

– Fully wired ready for connection (plug-in terminal strip)  
– Drilling template  
– Sealing mat  
– Assembly parts

**Approvals:**

Available on the Internet

**Performance diagrams:**

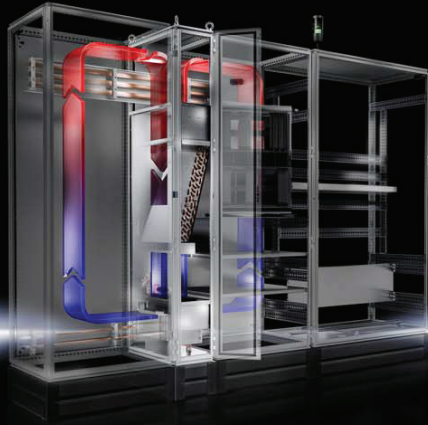
Available on the Internet

## Output class 1875 – 4000 W, roof-mounted

Model No.		Packs of	3209.504	3209.100	3209.500	3210.504	3210.100	3210.500	Page
Design	Water-carrying parts, copper/brass (Cu/CuZn)		–	■	■	–	■	■	
	Water-carrying parts, stainless steel (1.4571)		■	–	–	■	–	–	
Temperature control	Basic controller (factory setting +35°C)		–	■	–	–	■	–	
	e-Comfort controller (factory setting +35°C)		■	–	■	■	–	■	
<b>Total cooling output L35 W10, 400 l/h kW</b>			<b>1.88</b>	<b>2.5</b>	<b>2.5</b>	<b>3</b>	<b>4</b>	<b>4</b>	
Power consumption P <sub>el</sub> 50/60 Hz W			95 / 110	95 / 110	95 / 110	98 / 115	98 / 115	98 / 115	
Rated operating voltage V, ~, Hz			230, 1~, 50/60	230, 1~, 50/60	230, 1~, 50/60	230, 1~, 50/60	230, 1~, 50/60	230, 1~, 50/60	
Width mm			597	597	597	597	597	597	
Height mm			417	417	417	417	417	417	
Depth mm			475	475	475	475	475	475	
Rated current max. A			0.4 / 0.48	0.4 / 0.48	0.4 / 0.48	0.44 / 0.5	0.44 / 0.5	0.44 / 0.5	
Pre-fuse A			4	4	4	4	4	4	
Operating temperature range			+1°C...+70°C	+1°C...+70°C	+1°C...+70°C	+1°C...+70°C	+1°C...+70°C	+1°C...+70°C	
Setting range			+20°C...+55°C	+20°C...+55°C	+20°C...+55°C	+20°C...+55°C	+20°C...+55°C	+20°C...+55°C	
Water inlet temperature			+1°C...+30°C	+1°C...+30°C	+1°C...+30°C	+1°C...+30°C	+1°C...+30°C	+1°C...+30°C	
Water connection	½" connector sleeve		■	■	■	■	■	■	
	G ¾" external thread		■	■	■	■	■	■	
Permissible operating pressure (p. max.) bar			1 - 10	1 - 10	1 - 10	1 - 10	1 - 10	1 - 10	
Air throughput of fans (unimpeded air flow), internal circuit 50/60 Hz m³/h			925 / 1030	925 / 1030	925 / 1030	815 / 925	815 / 925	815 / 925	
Weight kg			23.5	23.5	23.5	25.5	25.5	25.5	
<b>Accessories</b>									
Door-operated switch		1 pc(s).	4127.010	4127.010	4127.010	4127.010	4127.010	4127.010	755
Master/slave cable		1 pc(s).	3124.100	–	3124.100	3124.100	–	3124.100	471
Interface board		1 pc(s).	3124.200	–	3124.200	3124.200	–	3124.200	470
Air duct system		1 pc(s).	3286.870	3286.870	3286.870	3286.870	3286.870	3286.870	461
Stoppers		2 pc(s).	3286.880	3286.880	3286.880	3286.880	3286.880	3286.880	463
Condensate hose		1 pc(s).	3301.612	3301.612	3301.612	3301.612	3301.612	3301.612	464
Flow regulator valve			see page	see page	see page	see page	see page	see page	465



# Liquid Cooling Package



**Accessories for climate control** Page 454 **Chillers** Page 446 **Therm software** Page 474

Air/water heat exchangers in TS 8 baying system, to fit 600 or 800 mm deep and 2000 mm high TS 8 enclosures. Air outlet either with 5 kW on each side or 10 kW on one side only. Flexible water connection options on the top or bottom of the unit.

**Colour:**

- RAL 7035

**Protection category IP to IEC 60 529:**

- IP 55

**Cooling medium:**

- Water (see Internet for specifications)

**Supply includes:**

- Wiring on terminal strip
- Front door

**Note:**

- Bayable by screw-fastening at the sides

**Approvals:**

- Available on the Internet

**Performance diagrams:**

Available on the Internet

Photo shows a configuration example with equipment not included in the scope of supply

## Output class 10 kW, LCP rack industry

Model No.		Packs of	3378.200	3378.280	Page
Design	Water-carrying parts, copper/brass (Cu/CuZn)		■	■	
<b>Total cooling output L35 W10, 2000 l/h kW</b>			<b>9.5</b>	<b>9.5</b>	
Power consumption P <sub>el</sub> 50/60 Hz W			350 / 350	350 / 350	
Rated operating voltage V, ~, Hz			230, 1~, 50/60	230, 1~, 50/60	
Width mm			300	300	
Height mm			2000	2000	
Depth mm			600	800	
Rated current max. A			2.65 / 2.62	2.65 / 2.62	
Pre-fuse A			4	4	
Operating temperature range			+5°C...+70°C	+5°C...+70°C	
Setting range			+20°C...+55°C	+20°C...+55°C	
Water inlet temperature			+7°C...+30°C	+7°C...+30°C	
Water connection	G ¾" internal thread		■	■	
Permissible operating pressure (p. max.) bar			1 - 6	1 - 6	
Air throughput of fans (unimpeded air flow), internal circuit 50/60 Hz m³/h			1950 / 1950	1950 / 1950	
Weight kg			106.0	115.0	
<b>Accessories</b>					
Base/plinth components, front and rear, 100 mm		2 pc(s).	8601.915	8601.915	619
Base/plinth trim panels, side, 100 mm		2 pc(s).	8601.060	8601.080	620
Base/plinth components, front and rear, 200 mm		2 pc(s).	8602.915	8602.915	619
Base/plinth trim panels, side, 200 mm		2 pc(s).	8602.060	8602.080	620
Side panels, screw-fastened, sheet steel		2 pc(s).	8106.235	8108.235	643
Condensate hose		1 pc(s).	3301.612	3301.612	464
Master/slave cable		1 pc(s).	3124.100	3124.100	471

# TopTherm chillers



Accessories for climate control Page 454 Flow regulator valve Page 465 Chiller configurator Page 475

#### Design:

- Compact, modular layout of the refrigeration components
- Nano-coated condenser
- Pump to convey the medium

#### Benefits:

- Precise temperature control, based on microprocessor technology
- Collective fault signal with floating contact
- One version for two frequencies = international compatibility

#### Temperature control:

- Microcontroller control (factory setting +20°C)

#### Colour:

- RAL 7035

#### Protection category IP to IEC 60 529:

- IP 44 (electrics)

#### Supply includes:

- Complete unit ready for connection
- Multilingual documentation including functional diagram and wiring plans

#### Note:

- For 3334.660, two metal filters are required

#### Characteristic curves of pump:

Available on the Internet

#### Approvals:

Available on the Internet

## Output class 1000 – 1500 W

Model No.	Packs of	3318.600	3318.610	3319.600	3319.610	Page
Total cooling output at $T_w = 10^\circ\text{C}/T_u = 32^\circ\text{C}$ kW		0.8 / 0.9	0.8 / 0.9	1.2 / 1.3	1.2 / 1.3	
<b>Total cooling output at <math>T_w = 18^\circ\text{C}/T_u = 32^\circ\text{C}</math> kW</b>		<b>1 / 1.1</b>	<b>1 / 1.1</b>	<b>1.5 / 1.7</b>	<b>1.5 / 1.7</b>	
Power consumption $P_{el}$ 50/60 Hz kW		0.69 / 1.07	0.69 / 1.07	0.86 / 0.99	0.86 / 0.99	
Rated operating voltage V, ~, Hz		230, 1~, 50/60	230, 1~, 50/60	230, 1~, 50/60	230, 1~, 50/60	
Width mm		600	600	600	600	
Height mm		400	400	400	400	
Depth mm		430	430	430	430	
Rated current max. A		5.1 / 5.6	5.1 / 5.6	5.7 / 5.6	5.7 / 5.6	
Operating temperature range		+10°C...+43°C	+10°C...+43°C	+10°C...+43°C	+10°C...+43°C	
Refrigerant		R134a	R134a	R134a	R134a	
Water connection	G ½" internal thread	■	■	■	■	
Temperature hysteresis		± 2 K	± 2 K	± 2 K	± 2 K	
Temperature of liquid		+10°C...+30°C	+10°C...+30°C	+10°C...+30°C	+10°C...+30°C	
Design		Pressure-sealed	Open	Pressure-sealed	Open	
Tank		–	PP plastic	–	PP plastic	
Tank capacity l		–	2.5	–	2.5	
Weight kg		48.0	48.0	51.0	51.0	
<b>Accessories</b>						
Metal filters	1 pc(s).	3286.510	3286.510	3286.510	3286.510	455
Levelling feet		–	–	–	–	
Twin castors		–	–	–	–	
Cooling medium (ready-mixed)		see page	see page	see page	see page	465

# TopTherm chillers

## Output class 3000 – 6000 W

Model No.	Packs of	3320.600	3334.600	3334.660	Page
Total cooling output at $T_w = 10^\circ\text{C}/T_u = 32^\circ\text{C}$ kW		2.7 / 3	3.9 / 4.7	4.8 / 5.2	
<b>Total cooling output at <math>T_w = 18^\circ\text{C}/T_u = 32^\circ\text{C}</math> kW</b>		<b>3 / 3.4</b>	<b>4.5 / 5.4</b>	<b>6.1 / 6.6</b>	
Power consumption $P_{el}$ 50/60 Hz kW		2.03 / 2.67	2.88 / 3.24	3.98 / 5.32	
Rated operating voltage $V_n$ , -, Hz		400, 3~, 50 460, 3~, 60	400, 3~, 50 460, 3~, 60	400, 3~, 50 460, 3~, 60	
Width mm		602	602	605	
Height mm		676	676	1034	
Depth mm		645	645	645	
Rated current max. A		4.05 / 4.35	5.6 / 6.15	8.2 / 8.5	
Operating temperature range		+10°C...+43°C	+10°C...+43°C	+10°C...+43°C	
Refrigerant		R134a	R134a	R134a	
Integral tank level display		■	■	■	
Water connection	G ½" internal thread	■	■	-	
	G ¾" internal thread	-	-	■	
Temperature hysteresis		± 2 K	± 2 K	± 2 K	
Temperature of liquid		+10°C...+30°C	+10°C...+30°C	+10°C...+30°C	
Design		Open	Open	Open	
Tank		PP plastic	PP plastic	PP plastic	
Tank capacity l		30	30	30	
Weight kg		88.0	94.0	125.0	
<b>Accessories</b>					
Metal filters	1 pc(s).	3286.520	3286.520	3286.510	455
Levelling feet	4 pc(s).	7493.100	7493.100	7493.100	628
Twin castors	1 pc(s).	6148.000	6148.000	6148.000	628
Cooling medium (ready-mixed)		see page	see page	see page	465



New

## Chiller configurator

see page 475

# TopTherm chillers



Accessories for climate control Page 454 Chiller configurator Page 475

## Design:

- Compact, modular layout of the refrigeration components
- Nano-coated condenser
- Pump to convey the medium
- Open system with tank

## Benefits:

- Precise temperature control, based on microprocessor technology
- Collective fault signal with floating contact
- One version for two frequencies = international compatibility

## Temperature control:

- Microcontroller control (factory setting +20°C)

## Colour:

- RAL 7035

## Protection category IP to IEC 60 529:

- IP 44 (electrics)

## Supply includes:

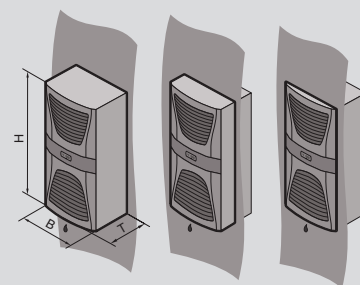
- Complete unit ready for connection
- Multilingual documentation including functional diagram and wiring plans

## Characteristic curves of pump:

Available on the Internet

## Approvals:

Available on the Internet



## Output class 1000 – 2500 W, wall-mounted

Model No.	Packs of	3360.100	3360.250	Page
Total cooling output at $T_w = 10^\circ\text{C}/T_u = 32^\circ\text{C}$ kW		0.8 / 0.9	2.1 / 2.3	
<b>Total cooling output at <math>T_w = 18^\circ\text{C}/T_u = 32^\circ\text{C}</math> kW</b>		<b>1 / 1.1</b>	<b>2.5 / 2.8</b>	
Power consumption $P_{el}$ 50/60 Hz kW		1.16 / 1.21	2.2 / 2.5	
Rated operating voltage $V_n$ , ~, Hz		400, 3~, 50 460, 3~, 60	400, 3~, 50 460, 3~, 60	
Width (B) mm		400	400	
Height (H) mm		950	1580	
Depth (T) mm		310	290	
Rated current max. A		4.2 / 4	5.5 / 5.6	
Operating temperature range		+10°C...+43°C	+10°C...+43°C	
Refrigerant		R134a	R134a	
Water connection	Quick-release coupling (counterpart included in accessory bag)	■	■	
Temperature hysteresis		± 2 K	± 2 K	
Temperature of liquid		+10°C...+30°C	+10°C...+30°C	
Tank		PP plastic	PP plastic	
Tank capacity l		5	10	
Weight kg		47.0	78.0	
<b>Accessories</b>				
Metal filters	1 pc(s).	3286.410	3286.410	455
Flow regulator valve		see page	see page	465
Cooling medium (ready-mixed)		see page	see page	465

# TopTherm chillers



Accessories for climate control Page 454 Base/plinth Page 616 Chiller configurator Page 475

#### Benefits:

- Modular design
- Small footprint
- Convenient servicing
- High reliability thanks to icing protection
- One version for two frequencies = international compatibility
- Fast availability, because the basic platform is available off the shelf

#### Temperature control:

- Microcontroller control (factory setting +18°C, differential value control also possible)

#### Colour:

- RAL 7035

#### Protection category IP to IEC 60 529:

- IP 44 (electrics)

#### Supply includes:

- Fully wired unit ready for connection with side panels and door
- Multilingual documentation including functional diagram and wiring plans

#### Note:

- For 3335.880 and 3335.890, two metal filters are required

#### Characteristic curves of pump:

Available on the Internet

#### Approvals:

Available on the Internet

## Output class 8000 – 16000 W

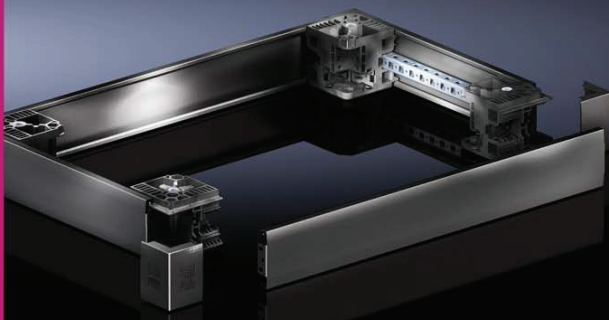
Model No.	Packs of	3335.790	3335.830	3335.840	3335.850	Page
Total cooling output at $T_w = 10^\circ\text{C}/T_u = 32^\circ\text{C}$ kW		6.5 / 7.5	6.5 / 7.5	10.3 / 11.3	13.8 / 15.2	
<b>Total cooling output at <math>T_w = 18^\circ\text{C}/T_u = 32^\circ\text{C}</math> kW</b>		<b>8 / 8.6</b>	<b>8 / 8.6</b>	<b>12 / 13.1</b>	<b>16 / 17.6</b>	
Power consumption $P_{el}$ 50/60 Hz kW		4.37 / 5.21	4.37 / 5.21	6.6 / 7.76	7.3 / 9.2	
Rated operating voltage V, ~, Hz		400, 3~, 50 460, 3~, 60	400, 3~, 50 460, 3~, 60	400, 3~, 50 460, 3~, 60	400, 3~, 50 460, 3~, 60	
Width mm		805	805	805	805	
Height mm		1700	2100	2140	2140	
Depth mm		605	605	605	605	
Rated current max. A		8.2 / 7.7	8.2 / 7.7	10 / 11.4	12.7 / 13.3	
Operating temperature range		+10°C...+43°C	+10°C...+43°C	+10°C...+43°C	+10°C...+43°C	
Refrigerant		R410a	R410a	R410a	R410a	
Water connection	G 1" internal thread	■	■	■	■	
Temperature hysteresis		± 2 K	± 2 K	± 2 K	± 2 K	
Temperature of liquid		+10°C...+25°C	+10°C...+25°C	+10°C...+25°C	+10°C...+25°C	
Tank capacity l		75	75	75	75	
Weight kg		242.0	248.0	282.0	282.0	
<b>Accessories</b>						
Metal filters	1 pc(s).	3286.550	3286.550	3286.530	3286.530	455
Levelling feet	4 pc(s).	7493.100	7493.100	7493.100	7493.100	628
Flow regulator valve		see page	see page	see page	see page	465
Cooling medium (ready-mixed)		see page	see page	see page	see page	465
Twin castors	4 pc(s).	7495.000	7495.000	7495.000	7495.000	628

# TopTherm chillers

## Output class 20000 – 40000 W

Model No.	Packs of	3335.860	3335.870	3335.880	3335.890	Page
Total cooling output at $T_w = 10^\circ\text{C}/T_u = 32^\circ\text{C}$ kW		16.6 / 18.7	20.8 / 23.8	27 / 30.4	32.5 / 37.5	
<b>Total cooling output at <math>T_w = 18^\circ\text{C}/T_u = 32^\circ\text{C}</math> kW</b>		<b>20 / 21.8</b>	<b>25 / 27.6</b>	<b>32 / 35.2</b>	<b>40 / 44</b>	
Power consumption $P_{el}$ 50/60 Hz kW		9.2 / 12	11.4 / 13.9	14.95 / 17.6	17.91 / 23.1	
Rated operating voltage V, -, Hz		400, 3-, 50 460, 3-, 60	400, 3-, 50 460, 3-, 60	400, 3-, 50 460, 3-, 60	400, 3-, 50 460, 3-, 60	
Width mm		1205	1205	1605	2405	
Height mm		2140	2140	2140	2140	
Depth mm		605	605	605	605	
Rated current max. A		20.1 / 17.3	22.8 / 23.8	26.3 / 26.7	38.4 / 32.7	
Operating temperature range		+10°C...+43°C	+10°C...+43°C	+10°C...+43°C	+10°C...+43°C	
Refrigerant		R410a	R410a	R410a	R410a	
Water connection	G 1" internal thread	■	■	-	-	
	G 1¼" internal thread	-	-	■	■	
Temperature hysteresis		± 2 K	± 2 K	± 2 K	± 2 K	
Temperature of liquid		+10°C...+25°C	+10°C...+25°C	+10°C...+25°C	+10°C...+25°C	
Tank capacity l		150	150	75	150	
Weight kg		360.0	374.0	511.0	646.0	
<b>Accessories</b>						
Metal filters	1 pc(s).	3286.540	3286.540	3286.530	3286.540	455
Levelling feet	4 pc(s).	7493.100	7493.100	7493.100	7493.100	628
Flow regulator valve		see page	see page	see page	see page	465
Cooling medium (ready-mixed)		see page	see page	see page	see page	465
Twin castors	4 pc(s).	7495.000	7495.000	7495.000	7495.000	628

Accessories



## Flex-Block base/plinth system

see page 616