

Air cooling

TopTherm fan-and-filter units

TopTherm fan-and-filter units.....	20 – 55 m ³ /h.....	394
TopTherm fan-and-filter units.....	105 – 180 m ³ /h.....	395
TopTherm fan-and-filter units.....	230 – 550 m ³ /h.....	395
TopTherm fan-and-filter units.....	700 m ³ /h.....	396
TopTherm fan-and-filter units, EMC	20 – 180 m ³ /h.....	397
TopTherm fan-and-filter units, EMC	230 – 900 m ³ /h.....	398
TopTherm fan-and-filter units, with EC technology	55 – 230 m ³ /h.....	399
TopTherm fan-and-filter units, with EC technology	550 – 900 m ³ /h.....	400
TopTherm fan-and-filter units, air throughput and protection category		401

Roof-mounted fans

Roof-mounted fans, roof ventilation	500 – 873 m ³ /h.....	402
Roof-mounted fans with EC technology	1069 m ³ /h.....	403

Rack-mounted climate control

Rack-mounted fans for 482.6 mm (19').....	320 – 480 m ³ /h.....	404
Vario rack-mounted fans for 482.6 mm (19')	320 – 480 m ³ /h.....	405
Tangential fans for 482.6 mm (19').....	320 m ³ /h.....	406

Air/air heat exchangers

TopTherm, wall-mounted with controller	17.5 – 90 W/K.....	407
Roof-mounted	66 W/K.....	408



TopTherm fan-and-filter units



Air throughputs incl. outlet filter and protection categories Page 401 **Accessories for climate control** Page 454 **Therm software** Page 474

Colour:

– RAL 7035

Supply includes:

– Complete unit ready to install, including filter mat

Note:

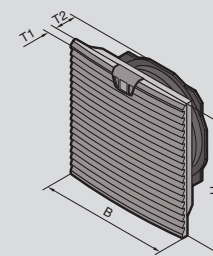
– With the fan-and-filter unit 3237.XXX, electrical connection is made via two single wires on the unit; for all other fan-and-filter units, a screwless spring terminal is used.

Approvals:

Available on the Internet

Performance diagrams:

Available on the Internet



Air throughput 20 – 55 m³/h

Model No.	Packs of	3237.100	3237.110	3237.124	3238.100	3238.110	3238.124	Page
Rated operating voltage V, ~, Hz		230, 1~, 50/60	115, 1~, 50/60	24 (DC)	230, 1~, 50/60	115, 1~, 50/60	24 (DC)	
Air throughput, unimpeded air flow m³/h		20 / 25	20 / 25	20	55 / 66	55 / 66	55	
Rated current A		0.065 / 0.052	0.12 / 0.1	0.125	0.12 / 0.11	0.24 / 0.22	0.24	
Pre-fuse A		2	2	2	2	2	2	
Motor circuit-breaker		–	–	–	–	–	–	
Power consumption W		11 / 9	11 / 9	3	19 / 18	19 / 18	5.5	
Width (B) mm		116.5	116.5	116.5	148.5	148.5	148.5	
Height (H) mm		116.5	116.5	116.5	148.5	148.5	148.5	
Depth (T1) mm		16	16	16	16	16	16	
Max. installation depth (T2) mm		43	43	43	58.5	58.5	58.5	
Required mounting cut-out (BxH) mm		92 x 92	92 x 92	92 x 92	124 x 124	124 x 124	124 x 124	
Fan		Axial, self-starting shaded pole motor	Axial, self-starting shaded pole motor	Axial, DC motor	Diagonal, self-starting shaded pole motor	Diagonal, self-starting shaded pole motor	Diagonal, DC motor	
Operating temperature range		-15°C...+55°C	-15°C...+55°C	-15°C...+55°C	-10°C...+55°C	-10°C...+55°C	-15°C...+55°C	
Storage temperature range		-30°C...+70°C	-30°C...+70°C	-30°C...+70°C	-30°C...+70°C	-30°C...+70°C	-30°C...+70°C	
Noise level dB(A)		38 / 43	38 / 43	38	46 / 49	46 / 49	46	
Weight kg		0.46	0.48	0.3	0.8	0.8	0.54	
Accessories								
Outlet filter	1 pc(s).	3237.200	3237.200	3237.200	3238.200	3238.200	3238.200	457
Spare filter mats		see page	see page	see page	see page	see page	see page	456
Fine filter mats	5 pc(s).	–	–	–	3238.055	3238.055	3238.055	457
Hose-proof hood	1 pc(s).	3237.080	3237.080	3237.080	3238.080	3238.080	3238.080	458
Blanking cover	2 pc(s).	3237.020	3237.020	3237.020	3238.020	3238.020	3238.020	459
Thermostat	1 pc(s).	3110.000	3110.000	3110.000	3110.000	3110.000	3110.000	467
Thermostat with strain relief	1 pc(s).	3110.100	3110.100	3110.100	3110.100	3110.100	3110.100	467
Digital enclosure internal temperature display and thermostat	1 pc(s).	3114.200	3114.200	3114.200	3114.200	3114.200	3114.200	466

TopTherm fan-and-filter units

Air throughput 105 – 180 m³/h

Model No.	Packs of	3239.100	3239.110	3239.124	3240.100	3240.110	3240.124	Page
Rated operating voltage V, ~, Hz		230, 1~, 50/60	115, 1~, 50/60	24 (DC)	230, 1~, 50/60	115, 1~, 50/60	24 (DC)	
Air throughput, unimpeded air flow m ³ /h		105 / 120	105 / 120	105	180 / 160	180 / 160	180	
Rated current A		0.12 / 0.11	0.24 / 0.22	0.23	0.21 / 0.19	0.42 / 0.38	0.43	
Pre-fuse A		2	2	2	2	4	2	
Motor circuit-breaker		–	–	–	–	–	–	
Power consumption W		19 / 18	19 / 18	5.5	35 / 34	35 / 34	10	
Width (B) mm		204	204	204	255	255	255	
Height (H) mm		204	204	204	255	255	255	
Depth (T1) mm		24	24	24	25	25	25	
Max. installation depth (T2) mm		90	90	90	107	107	107	
Required mounting cut-out (BxH) mm		177 x 177	177 x 177	177 x 177	224 x 224	224 x 224	224 x 224	
Fan		Diagonal, self-starting shaded pole motor	Diagonal, self-starting shaded pole motor	Diagonal, DC motor	Diagonal, self-starting shaded pole motor	Diagonal, self-starting shaded pole motor	Diagonal, DC motor	
Operating temperature range		-10°C...+55°C	-10°C...+55°C	-15°C...+55°C	-30°C...+55°C	-30°C...+55°C	-30°C...+55°C	
Storage temperature range		-30°C...+70°C	-30°C...+70°C	-30°C...+70°C	-30°C...+70°C	-30°C...+70°C	-30°C...+70°C	
Noise level dB(A)		46 / 49	46 / 49	46	51 / 46	51 / 46	51	
Weight kg		1.04	1.04	0.78	2.26	2.08	1.88	
Accessories								
Outlet filter	1 pc(s).	3239.200	3239.200	3239.200	3240.200	3240.200	3240.200	457
Spare filter mats		see page	see page	see page	see page	see page	see page	456
Fine filter mats	5 pc(s).	3181.100	3181.100	3181.100	3182.100	3182.100	3182.100	457
Hose-proof hood	1 pc(s).	3239.080	3239.080	3239.080	3240.080	3240.080	3240.080	458
Blanking cover	2 pc(s).	3239.020	3239.020	3239.020	3240.020	3240.020	3240.020	459
Thermostat	1 pc(s).	3110.000	3110.000	3110.000	3110.000	3110.000	3110.000	467
Thermostat with strain relief	1 pc(s).	3110.100	3110.100	3110.100	3110.100	3110.100	3110.100	467
Digital enclosure internal temperature display and thermostat	1 pc(s).	3114.200	3114.200	3114.200	3114.200	3114.200	3114.200	466

Air throughput 230 – 550 m³/h

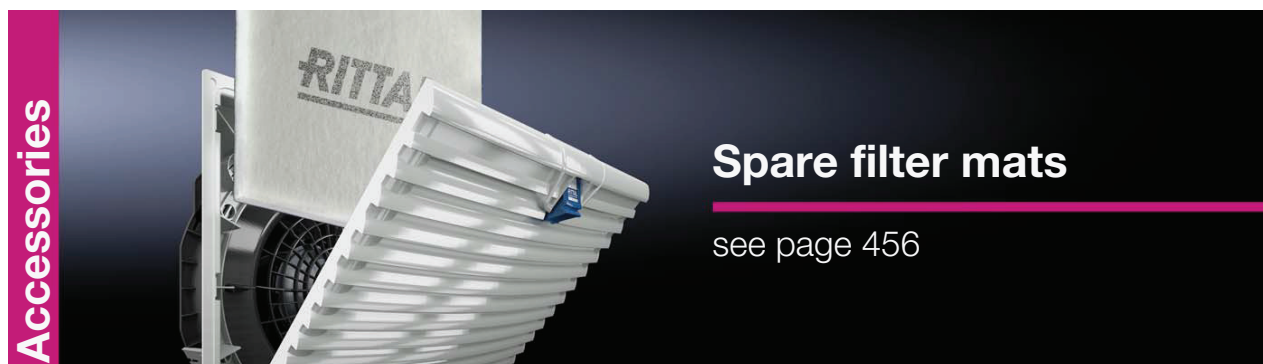
Model No.	Packs of	3241.100	3241.110	3241.124	3243.100	3243.110	Page
Rated operating voltage V, ~, Hz		230, 1~, 50/60	115, 1~, 50/60	24 (DC)	230, 1~, 50/60	115, 1~, 50/60	
Air throughput, unimpeded air flow m ³ /h		230 / 250	230 / 250	230	550 / 600	550 / 600	
Rated current A		0.26 / 0.24	0.52 / 0.48	0.8	0.37 / 0.39	0.78 / 0.8	
Pre-fuse A		4	4	2	4	6	
Motor circuit-breaker		–	–	–	–	–	
Power consumption W		40 / 42	40 / 42	19	70 / 87	75 / 90	
Width (B) mm		255	255	255	323	323	
Height (H) mm		255	255	255	323	323	
Depth (T1) mm		25	25	25	25	25	
Max. installation depth (T2) mm		107	107	107	118.5	118.5	
Required mounting cut-out (BxH) mm		224 x 224	224 x 224	224 x 224	292 x 292	292 x 292	
Fan		Diagonal, self-starting shaded pole motor	Diagonal, self-starting shaded pole motor	Diagonal, DC motor	Diagonal, 1-capacitor motor	Diagonal, 1-capacitor motor	
Operating temperature range		-30°C...+55°C	-30°C...+55°C	-30°C...+55°C	-30°C...+55°C	-30°C...+55°C	
Storage temperature range		-30°C...+70°C	-30°C...+70°C	-30°C...+70°C	-30°C...+70°C	-30°C...+70°C	
Noise level dB(A)		54 / 56	54 / 56	54	59 / 61	59 / 61	
Weight kg		2.235	2.26	2.04	3.58	3.58	
Accessories							
Outlet filter	1 pc(s).	3240.200	3240.200	3240.200	3243.200	3243.200	457
Spare filter mats		see page	see page	see page	see page	see page	456
Fine filter mats	5 pc(s).	3182.100	3182.100	3182.100	3183.100	3183.100	457
Hose-proof hood	1 pc(s).	3240.080	3240.080	3240.080	3243.080	3243.080	458
Blanking cover	2 pc(s).	3240.020	3240.020	3240.020	3243.020	3243.020	459
Thermostat	1 pc(s).	3110.000	3110.000	3110.000	3110.000	3110.000	467
Thermostat with strain relief	1 pc(s).	3110.100	3110.100	3110.100	3110.100	3110.100	467
Digital enclosure internal temperature display and thermostat	1 pc(s).	3114.200	3114.200	3114.200	3114.200	3114.200	466

TopTherm fan-and-filter units

Air throughput 700 m³/h

Model No.	Packs of	3244.100	3244.110	3244.140	Page
Rated operating voltage V, -, Hz		230, 1~, 50/60	115, 1~, 50/60	400, 3~, 50 460, 3~, 60	
Air throughput, unimpeded air flow m ³ /h		700 / 770	700 / 770	700 / 770	
Rated current A		0.43 / 0.6	0.9 / 1.25	0.17 / 0.21	
Pre-fuse A		4	6	-	
Motor circuit-breaker A		-	-	0.2...0.4	
Power consumption W		95 / 135	100 / 145	93 / 140	
Width (B) mm		323	323	323	
Height (H) mm		323	323	323	
Depth (T1) mm		25	25	25	
Max. installation depth (T2) mm		130.5	130.5	130.5	
Required mounting cut-out (BxH) mm		292 x 292	292 x 292	292 x 292	
Fan		Diagonal, 1~ capacitor motor	Diagonal, 1~ capacitor motor	Diagonal, three-phase motor	
Operating temperature range		-30°C...+55°C	-30°C...+55°C	-30°C...+55°C	
Storage temperature range		-30°C...+70°C	-30°C...+70°C	-30°C...+70°C	
Noise level dB(A)		65 / 66	65 / 66	67 / 70	
Weight kg		4.3	4.3	4.1	
Accessories					
Outlet filter	1 pc(s).	3243.200	3243.200	3243.200	457
Spare filter mats		see page	see page	see page	456
Fine filter mats	5 pc(s).	3183.100	3183.100	3183.100	457
Hose-proof hood	1 pc(s).	3243.080	3243.080	3243.080	458
Blanking cover	2 pc(s).	3243.020	3243.020	3243.020	459
Thermostat	1 pc(s).	3110.000	3110.000	3110.000	467
Thermostat with strain relief	1 pc(s).	3110.100	3110.100	3110.100	467
Digital enclosure internal temperature display and thermostat	1 pc(s).	3114.200	3114.200	3114.200	466

Accessories



Spare filter mats

see page 456

TopTherm fan-and-filter units



Air throughputs incl. outlet filter and protection categories Page 401 **Accessories for climate control** Page 454 **Therm software** Page 474

Colour:

- RAL 7035

Supply includes:

- Complete unit ready to install, including filter mat

Note:

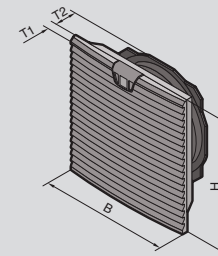
- For energy-efficient operation of the fan-and-filter units, we recommend using the enclosure internal thermostat, the speed control or the digital enclosure internal temperature display and thermostat

Approvals:

Available on the Internet

Performance diagrams:

Available on the Internet



Air throughput 20 – 180 m³/h, EMC

Model No.	Packs of	3237.600	3238.600	3239.600	3240.600	Page
Rated operating voltage V, ~, Hz		230, 1~, 50/60	230, 1~, 50/60	230, 1~, 50/60	230, 1~, 50/60	
Air throughput, unimpeded air flow m ³ /h		20 / 25	55 / 66	105 / 120	180 / 160	
Rated current A		0.065 / 0.052	0.12 / 0.11	0.12 / 0.11	0.21 / 0.19	
Pre-fuse A		2	2	2	2	
Power consumption W		11 / 9	19 / 18	19 / 18	35 / 34	
Width (B) mm		116.5	148.5	204	255	
Height (H) mm		116.5	148.5	204	255	
Depth (T1) mm		16	16	24	25	
Max. installation depth (T2) mm		43	58.5	90	107	
Required mounting cut-out (BxH) mm		92 x 92	124 x 124	177 x 177	224 x 224	
Fan		Axial, self-starting shaded pole motor	Diagonal, self-starting shaded pole motor	Diagonal, self-starting shaded pole motor	Diagonal, self-starting shaded pole motor	
Operating temperature range		-15°C...+55°C	-10°C...+55°C	-10°C...+55°C	-30°C...+55°C	
Storage temperature range		-30°C...+70°C	-30°C...+70°C	-30°C...+70°C	-30°C...+70°C	
Noise level dB(A)		38 / 43	46 / 49	46 / 49	51 / 46	
Weight kg		0.485	2.0	1.2	2.12	
Accessories						
Outlet filter	1 pc(s).	3237.060	3238.060	3239.060	3240.060	457
Spare filter mats	5 pc(s).	3237.066	3238.066	3239.066	3240.066	456
Fine filter mats	5 pc(s).	-	3238.055	3181.100	3182.100	457
Hose-proof hood	1 pc(s).	3237.080	3238.080	3239.080	3240.080	458
Speed control	1 pc(s).	3120.200	3120.200	3120.200	3120.200	470
Thermostat	1 pc(s).	3110.000	3110.000	3110.000	3110.000	467
Thermostat with strain relief	1 pc(s).	3110.100	3110.100	3110.100	3110.100	467
Digital enclosure internal temperature display and thermostat	1 pc(s).	3114.200	3114.200	3114.200	3114.200	466
Hygrostat	1 pc(s).	3118.000	3118.000	3118.000	3118.000	468
Hygrostat with strain relief	1 pc(s).	3118.100	3118.100	3118.100	3118.100	468

TopTherm fan-and-filter units

Air throughput 230 – 900 m³/h, EMC

Model No.	Packs of	3241.600	3243.600	3244.600	3245.600	Page
Rated operating voltage V, ~, Hz		230, 1~, 50/60	230, 1~, 50/60	230, 1~, 50/60	200 - 240, 1~, 50/60	
Air throughput, unimpeded air flow m ³ /h		230 / 250	550 / 600	700 / 770	900	
Rated current A		0.26 / 0.24	0.37 / 0.39	0.43 / 0.6	1.33 / 1.33	
Pre-fuse A		4	4	4	4	
Power consumption W		40 / 42	70 / 87	95 / 135	165 / 165	
Width (B) mm		255	323	323	323	
Height (H) mm		255	323	323	323	
Depth (T1) mm		25	25	25	25	
Max. installation depth (T2) mm		107	118.5	130.5	130.5	
Required mounting cut-out (BxH) mm		224 x 224	292 x 292	292 x 292	292 x 292	
Fan		Diagonal, self-starting shaded pole motor	Diagonal, 1~ capacitor motor	Diagonal, 1~ capacitor motor	Diagonal, EC motor	
Operating temperature range		-30°C...+55°C	-30°C...+55°C	-30°C...+55°C	-25°C...+55°C	
Storage temperature range		-30°C...+70°C	-30°C...+70°C	-30°C...+70°C	-25°C...+70°C	
Noise level dB(A)		54 / 56	59 / 61	65 / 66	72	
Weight kg		2.12	3.56	4.28	3.5	
Accessories						
Outlet filter	1 pc(s).	3240.060	3243.060	3243.060	3243.060	457
Spare filter mats	5 pc(s).	3240.066	3243.066	3243.066	3243.066	456
Fine filter mats	5 pc(s).	3182.100	3183.100	3183.100	3183.100	457
Hose-proof hood	1 pc(s).	3240.080	3243.080	3243.080	3245.080	458
Speed control	1 pc(s).	3120.200	3120.200	3120.200	-	470
Thermostat	1 pc(s).	3110.000	3110.000	3110.000	3110.000	467
Thermostat with strain relief	1 pc(s).	3110.100	3110.100	3110.100	3110.100	467
Digital enclosure internal temperature display and thermostat	1 pc(s).	3114.200	3114.200	3114.200	3114.200	466
Hygrostat	1 pc(s).	3118.000	3118.000	3118.000	3118.000	468
Hygrostat with strain relief	1 pc(s).	3118.100	3118.100	3118.100	3118.100	468

Accessories



EC speed control

see page 469

TopTherm fan-and-filter units



Air throughputs incl. outlet filter and protection categories Page 401 **Accessories for climate control** Page 454 **Therm software** Page 474

Energy-efficient version of the TopTherm fan-and-filter units with diagonal fan technology. Fans 3240.500 to 3245.510 may be controlled and monitored. The fan may be activated via the control interface with tachometer signal output integrated as standard, and monitoring of the fan speed and function is supported.

Colour:

– RAL 7035

Supply includes:

– Complete unit ready to install, including filter mat

Note:

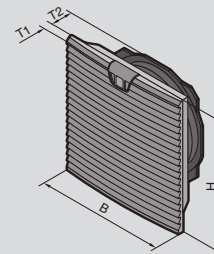
– For even more efficient operation or for monitoring the fan-and-filter units, we recommend the use of an EC speed control for EC fan-and-filter units

Approvals:

Available on the Internet

Performance diagrams:

Available on the Internet



Air throughput 55 – 230 m³/h, with EC technology

Model No.	Packs of	3238.500	3239.500	3240.500	3241.500	Page
Control interface		–	–	■	■	
Rated operating voltage V, ~, Hz		200 - 240, 1~, 50/60	200 - 240, 1~, 50/60	200 - 240, 1~, 50/60	200 - 240, 1~, 50/60	
Air throughput, unimpeded air flow m³/h		55	105	180	230	
Rated current A		0.05	0.05	0.12	0.17	
Pre-fuse A		6	6	6	6	
Power consumption W		6	6	11	16	
Width (B) mm		148.5	204	255	255	
Height (H) mm		148.5	204	255	255	
Depth (T1) mm		16	24	25	25	
Max. installation depth (T2) mm		58.5	90	107	107	
Required mounting cut-out (BxH) mm		124 x 124	177 x 177	224 x 224	224 x 224	
Fan		Diagonal, EC motor	Diagonal, EC motor	Diagonal, EC motor	Diagonal, EC motor	
Operating temperature range		-20°C...+55°C	-20°C...+55°C	-25°C...+55°C	-25°C...+55°C	
Storage temperature range		-30°C...+70°C	-30°C...+70°C	-25°C...+70°C	-25°C...+70°C	
Noise level dB(A)		49	53	47	52	
Weight kg		0.615	0.91	2.01	1.983	

Accessories

Outlet filter	1 pc(s).	3238.200	3239.200	3240.200	3240.200	457
Spare filter mats		see page	see page	see page	see page	456
Fine filter mats	5 pc(s).	3238.055	3181.100	3182.100	3182.100	457
Hose-proof hood	1 pc(s).	3238.080	3239.080	3240.080	3240.080	458
Blanking cover	2 pc(s).	3238.020	3239.020	3240.020	3240.020	459
EC speed control – Control unit for EC fan	1 pc(s).	–	–	3235.440	3235.440	469
EC speed control – Sensor for speed control	1 pc(s).	–	–	3235.450	3235.450	469
Thermostat	1 pc(s).	3110.000	3110.000	3110.000	3110.000	467
Thermostat with strain relief	1 pc(s).	3110.100	3110.100	3110.100	3110.100	467
Digital enclosure internal temperature display and thermostat	1 pc(s).	3114.200	3114.200	3114.200	3114.200	466

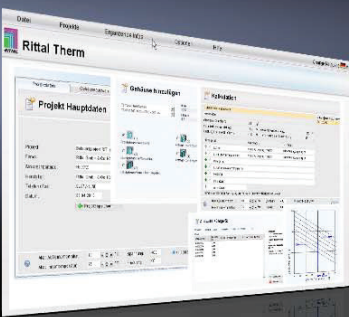
TopTherm fan-and-filter units

Air throughput 550 – 900 m³/h, with EC technology

Model No.	Packs of	3243.500	3244.500	3245.500	3245.510	Page
Control interface		■	■	■	■	
Rated operating voltage V, ~, Hz		200 - 240, 1~, 50/60	200 - 240, 1~, 50/60	200 - 240, 1~, 50/60	100 - 130, 1~, 50/60	
Air throughput, unimpeded air flow m³/h		550	700	900	900	
Rated current A		0.5	0.7	1.33	2.1	
Pre-fuse A		6	6	4	6	
Power consumption W		51	80	165	165	
Width (B) mm		323	323	323	323	
Height (H) mm		323	323	323	323	
Depth (T1) mm		25	25	25	25	
Max. installation depth (T2) mm		118.5	130.5	130.5	130.5	
Required mounting cut-out (BxH) mm		292 x 292	292 x 292	292 x 292	292 x 292	
Fan		Diagonal, EC motor	Diagonal, EC motor	Diagonal, EC motor	Diagonal, EC motor	
Operating temperature range		-25°C...+55°C	-25°C...+55°C	-25°C...+55°C	-25°C...+55°C	
Storage temperature range		-25°C...+70°C	-25°C...+70°C	-25°C...+70°C	-25°C...+70°C	
Noise level dB(A)		63	64	72	72	
Weight kg		2.92	2.7	3.46	3.76	
Accessories						
Outlet filter	1 pc(s).	3243.200	3243.200	3243.200	3243.200	457
Spare filter mats		see page	see page	see page	see page	456
Fine filter mats	5 pc(s).	3183.100	3183.100	3183.100	3183.100	457
Hose-proof hood	1 pc(s).	3243.080	3243.080	3245.080	3245.080	458
Blanking cover	2 pc(s).	3243.020	3243.020	3243.020	3243.020	459
EC speed control – Control unit for EC fan	1 pc(s).	3235.440	3235.440	3235.440	3235.440	469
EC speed control – Sensor for speed control	1 pc(s).	3235.450	3235.450	3235.450	3235.450	469
Thermostat	1 pc(s).	3110.000	3110.000	3110.000	3110.000	467
Thermostat with strain relief	1 pc(s).	3110.100	3110.100	3110.100	3110.100	467
Digital enclosure internal temperature display and thermostat	1 pc(s).	3114.200	3114.200	3114.200	3114.200	466



Accessories



Therm software

see page 474

TopTherm fan-and-filter units

Air throughput and protection category

TopTherm fan-and-filter units

Model No.	Air throughput m ³ /h at 50/60 Hz				Protection category IP to IEC 60 529/NEMA protection category											
	Unimpeded air flow	With outlet filter including filter mat			Standard filter	Standard filter and additional micro-filter mat	Standard filter and hose-proof hood									
3237.100	20/25	1 x 3237.200	-	-	IP 54/ Type 12	-	IP 56/ Type 3, 3R									
3237.110		15/18	-	-												
3237.124		20	-	-												
3238.100	55/66	1 x 3238.200	2 x 3238.200	-		IP 54/ Type 12	-									
3238.110		43/50	46/56													
3238.124	55	1 x 3238.200	2 x 3238.200	-		IP 55/ Type 12	-									
		43	46													
3239.100	105/120	1 x 3239.200	2 x 3239.200	1 x 3240.200		IP 54/ Type 12	-	IP 56/ Type 3, 3R Type 4, 4X								
3239.110		87/100	93/108	98/111												
3239.124	105	1 x 3239.200	2 x 3239.200	1 x 3240.200												
		87	93	98												
3240.100	180/160	1 x 3240.200	2 x 3240.200	1 x 3243.200					IP 54/ Type 12	-	IP 56/ Type 3, 3R Type 4, 4X					
3240.110		138/121	165/140	165/140												
3240.124	180	1 x 3240.200	2 x 3240.200	1 x 3243.200												
		138	165	165												
3241.100	230/250	1 x 3240.200	2 x 3240.200	1 x 3243.200	IP 54/ Type 12							-	IP 56/ Type 3, 3R Type 4, 4X			
3241.110		183/205	203/230	203/230												
3241.124	230	1 x 3240.200	2 x 3240.200	1 x 3243.200												
		183	203	203												
3243.100	550/600	1 x 3243.200	2 x 3243.200	-										IP 54/ Type 12	-	IP 56/ Type 3, 3R Type 4, 4X
3243.110		465/510	508/548	-												
3244.100	700/770	1 x 3243.200	2 x 3243.200	-												
3244.110		544/587	614/662	-												
3244.140																

TopTherm fan-and-filter units, EMC

Model No.	Air throughput m ³ /h at 50/60 Hz				Protection category IP to IEC 60 529/NEMA protection category													
	Unimpeded air flow	With EMC outlet filter including EMC filter mat			Standard filter	Standard filter and additional micro-filter mat	Standard filter and hose-proof hood											
3237.600	20/25	1 x 3237.060	-	-	IP 54/ Type 12	-	IP 56/ Type 3, 3R											
3238.600	55/66	1 x 3238.060	2 x 3238.060	-		IP 54/ Type 12	IP 56/ Type 3, 3R Type 4, 4X											
3239.600	105/120	1 x 3239.060	2 x 3239.060	1 x 3240.060		IP 54/ Type 12		IP 56/ Type 3, 3R Type 4, 4X										
		87/100	93/108	98/111														
3240.600	180/160	1 x 3240.060	2 x 3240.060	1 x 3243.060					IP 54/ Type 12	IP 56/ Type 3, 3R Type 4, 4X								
		138/121	165/140	165/140														
3241.600	230/250	1 x 3240.060	2 x 3240.060	1 x 3243.060							IP 54/ Type 12	IP 56/ Type 3, 3R Type 4, 4X						
		183/205	203/230	203/230														
3243.600	550/600	1 x 3243.060	2 x 3243.060	-									IP 54/ Type 12	IP 56/ Type 3, 3R Type 4, 4X				
		465/510	508/548	-														
3244.600	700/770	1 x 3243.060	2 x 3243.060	-											IP 54/ Type 12	IP 56/ Type 3, 3R Type 4, 4X		
		544/587	630/690	-														
3245.600	900	1 x 3243.060	2 x 3243.060	-													IP 51	IP 52
		680	820	-														IP 56/ Type 1, 12 Type 3, 3R

TopTherm fan-and-filter units with EC technology

Model No.	Air throughput m ³ /h at 50/60 Hz				Protection category IP to IEC 60 529/NEMA protection category															
	Unimpeded air flow	With outlet filter including filter mat			Standard filter	Standard filter and additional micro-filter mat	Standard filter and hose-proof hood													
3238.500	55	1 x 3238.200	2 x 3238.200	-	IP 54/ Type 12	IP 54/ Type 12	IP 56/ Type 3, 3R Type 4, 4X													
3239.500	105	1 x 3239.200	2 x 3239.200	1 x 3240.200		IP 54/ Type 12		IP 55/ Type 12												
		87	93	98																
3240.500	180	1 x 3240.200	2 x 3240.200	1 x 3243.200					IP 54/ Type 12	IP 55/ Type 12										
		138	165	165																
3241.500	230	1 x 3240.200	2 x 3240.200	1 x 3243.200							IP 54/ Type 12	IP 55/ Type 12								
		183	203	203																
3243.500	550	1 x 3243.200	2 x 3243.200	-									IP 54/ Type 12	IP 55/ Type 12						
		465	508	-																
3244.500	700	1 x 3243.200	2 x 3243.200	-											IP 54/ Type 12	IP 55/ Type 12				
		544	630	-																
3245.500	900	1 x 3243.200	2 x 3243.200	-													IP 54/ Type 12	IP 55/ Type 12		
		680	820	-																
3245.510	900	1 x 3243.200	2 x 3243.200	-															IP 51	IP 52
		680	820	-																IP 56/ Type 1, 12 Type 3, 3R

Roof-mounted fan, roof vent



Accessories for climate control Page 454

Colour:

– RAL 7035

Protection category IP to IEC 60 529:

– IP 21 without filter mat
– IP 55 including filter mat

Supply includes:

– Complete unit ready to install, including filter mat

Note:

– For energy-efficient operation of the fans, we recommend the use of thermostats or temperature displays

Approvals:

Available on the Internet

Performance diagrams:

Available on the Internet

Air throughput, unimpeded air flow 500 – 873 m³/h

Model No.	Packs of	3138.000	3139.100	3139.110	3140.100	3140.110	3140.140	Page
Rated operating voltage V, ~, Hz		–	230, 1~, 50/60	115, 1~, 50/60	230, 1~, 50/60	115, 1~, 50/60	400, 3~, 50/60 460, 3~, 60	
Air throughput, unimpeded air flow (without filter mats) m³/h		–	500 / 525	500 / 525	873 / 965	873 / 965	863 / 942	
Air throughput, unimpeded air flow (with filter mats) m³/h		–	417 / 446	417 / 446	725 / 759	725 / 759	700 / 749	
Rated current A		–	0.22 / 0.27	0.43 / 0.55	0.43 / 0.56	0.88 / 1.17	0.17 / 0.19	
Pre-fuse A		–	6	6	6	6	–	
Motor circuit-breaker A		–	–	–	–	–	6.3...10	
Power consumption W		–	50 / 62	49 / 62	98 / 130	101 / 135	90 / 122	
Width mm		400	400	400	400	400	400	
Height mm		133	133	133	133	133	133	
Depth mm		400	400	400	400	400	400	
Max. installation depth mm		27.5	34.6	34.6	34.6	34.6	34.6	
Required mounting cut-out mm		258 x 258	258 x 258	258 x 258	258 x 258	258 x 258	258 x 258	
Fan		without fan motor	Radial, capacitor motor	Radial, capacitor motor	Radial, capacitor motor	Radial, capacitor motor	Radial, rotary current motor	
Operating temperature range		-30°C...+55°C	-30°C...+55°C	-30°C...+55°C	-30°C...+55°C	-30°C...+55°C	-30°C...+55°C	
Storage temperature range		-40°C...+70°C	-40°C...+70°C	-40°C...+70°C	-40°C...+70°C	-40°C...+70°C	-40°C...+70°C	

Accessories

Accessories		3243.200	3243.200	3243.200	3243.200	3243.200	3243.200	Page
Outlet filter	1 pc(s).	3243.200	3243.200	3243.200	3243.200	3243.200	3243.200	457
Spare filter mats	12 pc(s).	3174.100	3174.100	3174.100	3174.100	3174.100	3174.100	456
Thermostat	1 pc(s).	–	3110.000	3110.000	3110.000	3110.000	3110.000	467
Thermostat with strain relief	1 pc(s).	–	3110.100	3110.100	3110.100	3110.100	3110.100	467
Digital enclosure internal temperature display and thermostat	1 pc(s).	–	3114.200	3114.200	3114.200	3114.200	3114.200	466
Hygrostat	1 pc(s).	–	3118.000	3118.000	3118.000	3118.000	3118.000	468
Hygrostat with strain relief	1 pc(s).	–	3118.100	3118.100	3118.100	3118.100	3118.100	468

Roof-mounted fans



Accessories for climate control Page 454

Energy-efficient and powerful design of the roof-mounted fans. The fan may be activated via the control interface with tachometer signal output integrated as standard, and monitoring of the fan speed and function is supported.

Colour:

- RAL 7035

Protection category IP to IEC 60 529:

- IP 21 without filter mat
- IP 55 including filter mat

Supply includes:

- Complete unit ready to install, including filter mat

Note:

- For even more efficient operation or for monitoring the fans, we recommend the use of the EC speed controls

Approvals:

Available on the Internet

Performance diagrams:

Available on the Internet

Air throughput, unimpeded air flow 1069 m³/h, with EC technology

Model No.	Packs of	3140.500	3140.510	Page
Control interface		■	■	
Rated operating voltage V, ~, Hz		230, 1~, 50/60	115, 1~, 50/60	
Air throughput, unimpeded air flow (without filter mats) m³/h		1069 / 1069	1069 / 1069	
Air throughput, unimpeded air flow (with filter mats) m³/h		841 / 841	841 / 841	
Rated current A		0.99 / 0.99	1.45 / 1.45	
Pre-fuse A		6	6	
Power consumption W		129 / 129	106 / 106	
Width mm		400	400	
Height mm		133	133	
Depth mm		400	400	
Max. installation depth mm		34.6	34.6	
Required mounting cut-out mm		258 x 258	258 x 258	
Fan		Radial, EC motor	Radial, EC motor	
Operating temperature range		-30°C...+55°C	-30°C...+55°C	
Storage temperature range		-40°C...+70°C	-40°C...+70°C	
Accessories				
Outlet filter	1 pc(s).	3243.200	3243.200	457
Spare filter mats	12 pc(s).	3174.100	3174.100	456
EC speed control Control unit for EC fan	1 pc(s).	3235.440	3235.440	469
EC speed control Sensor for speed control	1 pc(s).	3235.450	3235.450	469
Thermostat	1 pc(s).	3110.000	3110.000	467
Thermostat with strain relief	1 pc(s).	3110.100	3110.100	467
Digital enclosure internal temperature display and thermostat	1 pc(s).	3114.200	3114.200	466
Hygrostat	1 pc(s).	3118.000	3118.000	468
Hygrostat with strain relief	1 pc(s).	3118.100	3118.100	468

Rack-mounted fans for 482.6 mm (19")



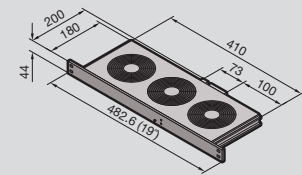
Accessories for climate control Page 454

Supply includes:

- Fully wired unit ready for connection
- Terminal strip and assembly parts

Approvals:

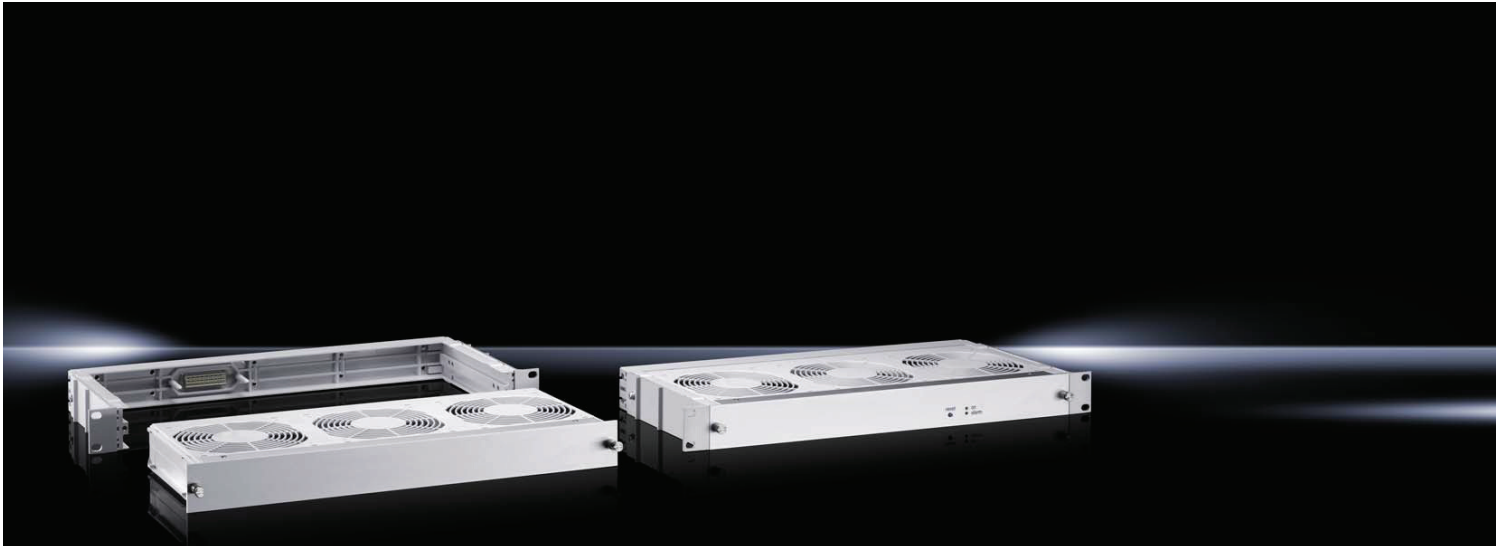
Available on the Internet



Air throughput, unimpeded air flow 320 – 480 m³/h

Model No.	Packs of	3340.230	3341.115	3341.230	3342.024	3342.230	3342.500	Page
With monitoring		-	-	-	-	-	■	
Rated operating voltage V, ~, Hz		230, 1~, 50/60	115, 1~, 50/60	230, 1~, 50/60	24 (DC)	230, 1~, 50/60	115 - 230, 1~, 50/60 24 (DC)	
Air throughput, unimpeded air flow m³/h		320	480	480	480	480	480	
No. of fans		2	3	3	3	3	3	
Distance between axes mm		85	85	85	105	105	105	
Rated current A		0.24 / 0.22	0.69 / 0.69	0.36 / 0.33	0.74	0.36 / 0.33	0.85	
Pre-fuse A		6	6	6	6	6	6	
Width mm		482.6	482.6	482.6	482.6	482.6	482.6	
Height mm		44	44	44	44	44	44	
Depth mm		200	200	200	200	200	200	
Operating temperature range		-10°C...+55°C	-10°C...+55°C	-10°C...+55°C	-10°C...+55°C	-10°C...+55°C	-10°C...+55°C	
Noise level dB(A)		51	52	51	51	51	51	
Weight kg		2.24	2.0	2.74	1.86	2.78	2.0	
Accessories								
Digital enclosure internal temperature display and thermostat	1 pc(s).	3114.200	3114.200	3114.200	3114.200	3114.200	3114.200	466
Thermostat	1 pc(s).	3110.000	3110.000	3110.000	3110.000	3110.000	3110.000	467
Thermostat with strain relief	1 pc(s).	3110.100	3110.100	3110.100	3110.100	3110.100	3110.100	467
Speed control	1 pc(s).	3120.200	3120.200	3120.200	-	3120.200	-	470

Vario rack-mounted fans for 482.6 mm (19")



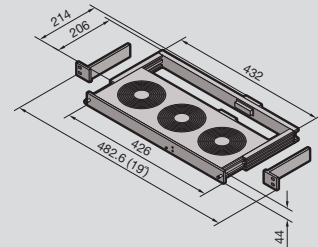
Accessories for climate control Page 454

Supply includes:

- Fully wired unit ready for connection
- Terminal strip and assembly parts

Approvals:

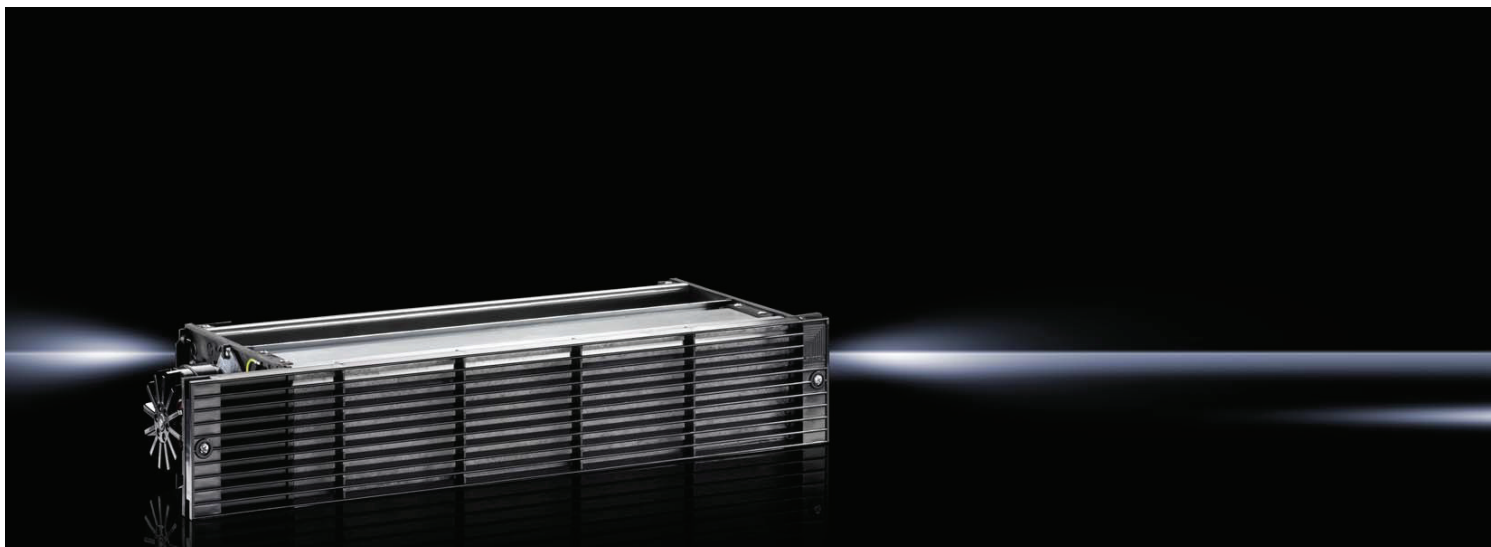
Available on the Internet



Air throughput, unimpeded air flow 320 – 480 m³/h

Model No.	Packs of	3350.230	3351.230	3352.230	3352.500	Page
With monitoring		-	-	-	■	
Rated operating voltage V, ~, Hz		230, 1~, 50/60	230, 1~, 50/60	230, 1~, 50/60	115 - 230, 1~, 50/60 24 (DC)	
Air throughput, unimpeded air flow m³/h		320	480	480	480	
No. of fans		2	3	3	3	
Distance between axes mm		85	85	105	105	
Rated current A		0.24 / 0.22	0.36 / 0.33	0.36 / 0.33	0.85 / 0.85	
Pre-fuse A		6	6	6	6	
Width mm		482.6	482.6	482.6	482.6	
Height mm		44	44	44	44	
Depth mm		200	200	200	200	
Operating temperature range		-10°C...+55°C	-10°C...+55°C	-10°C...+55°C	-10°C...+55°C	
Noise level dB(A)		51	51	51	51	
Weight kg		2.0	2.7	2.78	2.04	
Also required						
Guide frame	1 pc(s).	3355.100	3355.100	3355.100	3357.100	
Accessories						
Digital enclosure internal temperature display and thermostat	1 pc(s).	3114.200	3114.200	3114.200	3114.200	466
Thermostat	1 pc(s).	3110.000	3110.000	3110.000	3110.000	467
Thermostat with strain relief	1 pc(s).	3110.100	3110.100	3110.100	3110.100	467
Speed control	1 pc(s).	3120.200	3120.200	3120.200	-	470

Tangential fans for 482.6 mm (19")



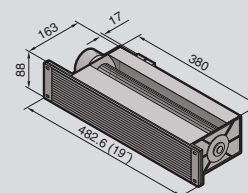
Accessories for climate control Page 454

Supply includes:

- Fully wired unit ready for connection
- Filter mat

Approvals:

Available on the Internet



Air throughput, unimpeded air flow 320 m³/h

Model No.	Packs of	3144.000	Page
Rated operating voltage V, ~, Hz		230, 1~, 50/60	
Air throughput, unimpeded air flow m³/h		320	
Rated current A		0.16	
Power consumption W		37	
Width mm		482.6	
Height mm		88	
Depth mm		158	
Operating temperature range		-10°C...+55°C	
Noise level dB(A)		52	
Speed rpm		2245	
Maximum static pressure difference Pa		65 - 70	
Weight kg		2.02	
Accessories			
Digital enclosure internal temperature display and thermostat	1 pc(s).	3114.200	466
Thermostat	1 pc(s).	3110.000	467
Thermostat with strain relief	1 pc(s).	3110.100	467
Filter mats	5 pc(s).	3177.000	454
Front outlet grille 2 U	1 pc(s).	3176.000	459
Speed control	1 pc(s).	3120.200	470

TopTherm air/air heat exchanger



Accessories for climate control Page 454

Temperature control:

- Electronic control with digital display (factory setting +35°C)

Colour:

- RAL 7035

Protection category IP to IEC 60 529:

- Internal circuit IP 54

Supply includes:

- Complete unit ready for connection
- Plug-in terminal strip
- Floating fault signal contact in case of overtemperature

Approvals:

Available on the Internet

Performance diagrams:

Available on the Internet

Specific thermal output 17.5 – 90 W/K, wall-mounted with controller

Model No.	Packs of	3126.100	3127.100	3128.100	3129.100	3130.100	Page
Rated operating voltage V, ~, Hz		230, 1~, 50/60	230, 1~, 50/60	230, 1~, 50/60	230, 1~, 50/60	230, 1~, 50/60	
Specific thermal output W/K		17.5	30	45	60	90	
Max. rated current per fan A		0.11 / 0.13	0.28 / 0.34	0.3 / 0.4	0.38 / 0.4	0.67 / 0.88	
Pre-fuse A		2	2	2	2	4	
Output per fan W		23 / 27	60 / 75	70 / 90	85 / 90	150 / 200	
Air throughput of fans (unimpeded air flow), external circuit m³/h		265 / 315	480 / 525	600 / 625	860 / 900	850 / 945	
Air throughput of fans (unimpeded air flow), internal circuit m³/h		265 / 315	480 / 525	600 / 625	860 / 900	850 / 945	
Width mm		280	400	400	400	400	
Height mm		550	950	950	950	1580	
Depth mm		150	205	205	225	215	
Operating temperature range		-5°C...+55°C	-5°C...+55°C	-5°C...+55°C	-5°C...+55°C	-5°C...+55°C	
Weight kg		10.0	18.0	19.0	21.0	34.0	
Accessories							
Filter mats	3 pc(s).	3286.300	3286.400	3286.400	3286.400	3286.400	454
Metal filters	1 pc(s).	3286.310	3286.410	3286.410	3286.410	3286.410	455

Air/air heat exchanger



Accessories for climate control Page 454 **Therm software** Page 474

Colour:

- RAL 7035
- RAL 9005

Protection category IP to IEC 60 529:

- Internal circuit IP 54

Supply includes:

- Complete unit ready for connection
- The fans are connected via two 3-wire connection cables, with wire end ferrules

Note:

- For precise temperature control inside the enclosure, we recommend the enclosure internal thermostat, the digital enclosure internal temperature display and thermostat or the speed control

Specific thermal output 66 W/K, roof-mounted

Model No.	Packs of	3248.000	Page
Rated operating voltage V, ~, Hz		230, 1~, 50/60	
Specific thermal output W/K		66	
No. of fans		2	
Max. rated current per fan A		0.45 / 0.55	
Pre-fuse A		4	
Output per fan W		75	
Air throughput of fans (unimpeded air flow), external circuit m ³ /h		965	
Air throughput of fans (unimpeded air flow), internal circuit m ³ /h		965	
Width mm		595	
Height mm		362	
Depth mm		440	
Operating temperature range		-5°C...+55°C	
Type of electrical connection		Connection cable	
Weight kg		16.8	
Accessories			
Digital enclosure internal temperature display and thermostat	1 pc(s).	3114.200	466
Thermostat	1 pc(s).	3110.000	467
Thermostat with strain relief	1 pc(s).	3110.100	467
Hygrostat	1 pc(s).	3118.000	468
Hygrostat with strain relief	1 pc(s).	3118.100	468
Speed control	1 pc(s).	3120.200	470

Rittal – The System.

Faster – better – everywhere.

Roof-mounted fans – Simple assembly and a high protection category



ENCLOSURES

POWER DISTRIBUTION

CLIMATE CONTROL

IT INFRASTRUCTURE

SOFTWARE & SERVICES



FRIEDHELM LOH GROUP

Rittal – The System.

Faster – better – everywhere.

