



Industrial Vision Systems

• Innovation • Knowledge • Success •

AMPOULE INSPECTION SYSTEM





Industrial Vision Systems

• Innovation • Knowledge • Success •

Inspection Area :



neck height

Score

body height

Features :

- High Rate of flexibility And Compatibility.
- Easy Operation,High Durability.
- High Resolution CCD Camera Increases accuracy And Reliability of the Inspection.
- Automatic Rejection System
- Statistical Management of quality through Synchronized reports.
- 100% quality control
- Operation is done by via touch screen with password protection.
- It Can Detects different Sizes Ampoule
- Inspection Speed is 15000 to 18000 samples per Hour.



Industrial Vision Systems

• Innovation • Knowledge • Success •

Benefits:

- Provides Stable inspection operation for long period of time.
- Uses high resolution CCD camera to improve accuracy.
- Important production data, Parameters, Rejection and defect rates,
- Use of high Intensity LED stroboscope illumination extend the service lifespan of the unit.
- To reduce manpower.
- To improve the quality.
- High Inspection Rate with required accuracy.
- Less Maintenance cost.
- Wide Colour Range.

Technical Specifications:

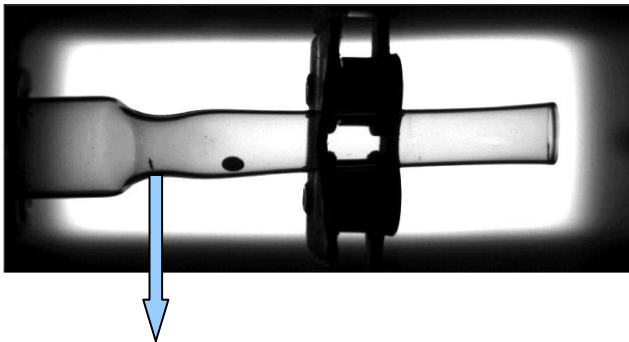
INSPECTION CAPABILITIES	1 .Colour dot presence/absence 2. Score presence/absence 3. Colour ring presence/absence 4. Dimension inspection 5. Offset between centre of gravities of dot and score 6. Area of dot and score
SYSTEM ACCURACY	defect detection 100 %
SYSTEM SPEED	15,000-18,000 Per hour.
PRODUCTS TYPE	All Types of ampoule
CAMERA	Higher Range High resolution With controller
LENS	High Resolution lens.
ILLUMINATION	High intensity back lighting.



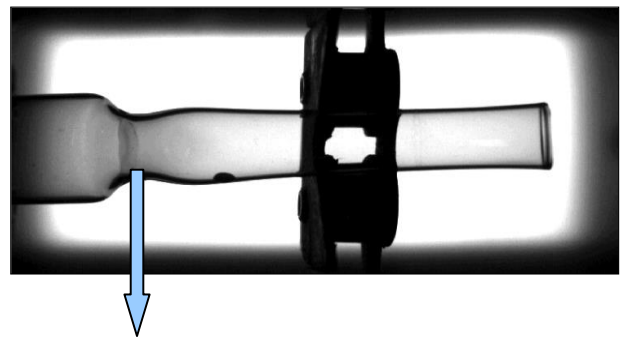
Industrial Vision Systems

• Innovation • Knowledge • Success •

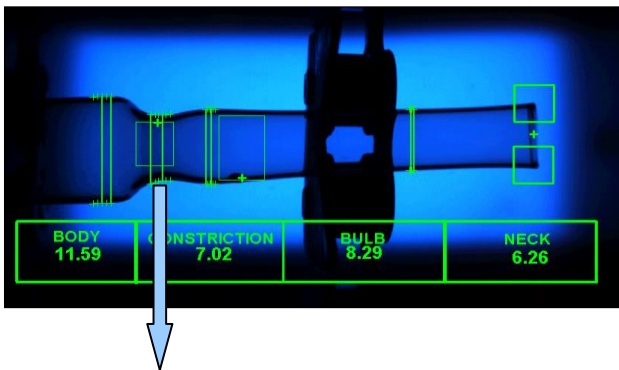
Table Below Pic shows the Camera results for **OK** and **NG** samples



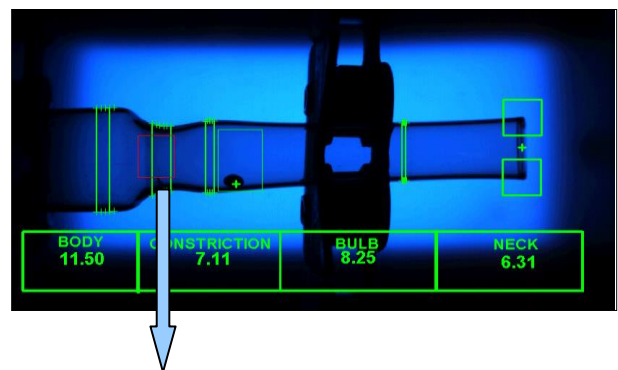
OK Sample (Score present)



NG Sample (Score absent)



OK Sample (Score present)



NG Sample (Score absent)

